



*lux*

| *Lighting projects by 2nd year  
bachelor students at Oslo and  
Akershus University College  
of Applied Sciences.*

Exhibition at the Norwegian  
Centre for Design and Architecture  
June 3.-15. 2015

# welcome!

---

What a joy it is to have the opportunity to write a few words in the catalogue for this year's exhibition related to the topic Product Aesthetics and cultural understanding for 2BA. This is a very important event for our students at the Department of Produktdesign, and for all design enthusiasts.

In this course, students have worked formidably, they have incorporated several different disciplines and have conducted a complete design process where the end result is exhibited. It is very impressive and I hope many will share and enjoy the experience. It's worth it!

Heartfelt thanks to the students, the staff who have been involved and to Doga that let us exhibit.



**Gunnar H. Gundersen**  
Head of Department, Product Design

DEPARTMENT OF  
PRODUCT DESIGN



# *light, space and culture*

---

Light, darkness and shadow are basic factors in the creation of our cultural milieu. This fact has constituted the departure point for the study unit “Product Aesthetics and Cultural Understanding” for the 2nd year bachelor students. We have called it “Light – Milieu – Culture”. The students have been encouraged to work with this theme as a discursive arena in both their practical and written assignments. The course has contained excursions to various cultural sites in New York and Oslo/Akershus, lectures, workshop courses, and collaboration with Norsk Lyskultur.

The results should not be regarded as final products or prototypes, but as ideas for the creation of such spaces. The type of sites and the ideas for solutions display great variety and imagination. With the exhibition at DogA we hope to share the results and the students’ explorations with the audience.

Thanks to our cooperating partners Norsk Lyskultur, Philips and DogA.



**Kyrre Andersen**  
Associate Professor



**Astrid Skjerven**  
Professor



Andrea Marian Bue Andersen  
Trondheim, Norway  
a\_bue10@hotmail.com  
+47 41211521

# 01 Ignis

Technological globalization has created an enormous mobility, and we are “online” wherever we are. This creates an absence of reality and one gets pulled away from the moment. Ignis provides a feeling of peace and intimacy, letting the user appreciate the moment.





## 02 Adapt

Adapt the light to fit your needs, even in small spaces.  
Use it, fold it, and take it with you.  
Adapt it.

Sofie Marie Blattmann  
Oslo, Norway  
sofiemblattmann@gmail.com  
+47 93265934



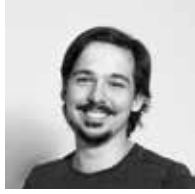


## 03 Vend

Inspired by the beauty of light in art, Vend is a lamp that lets you experience light in different ways. The lamp can be turned resulting in different illuminations, to obtain the lighting of your choice.

Viktoria Brønlund  
Nordland, Norway  
lund.viktoria@gmail.com  
+47 95727356





## 04 Kawai

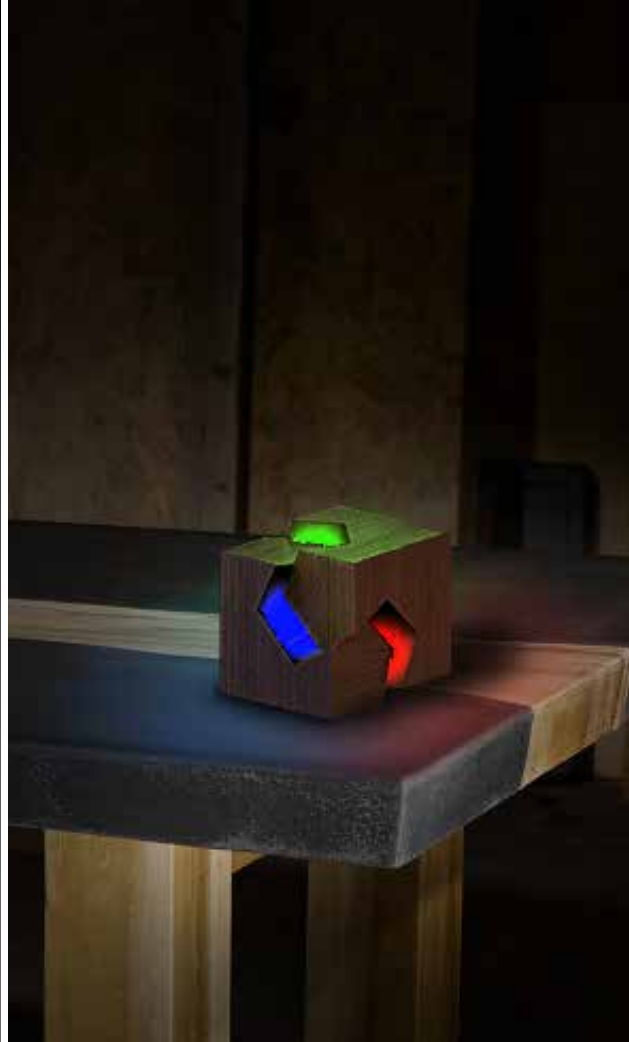
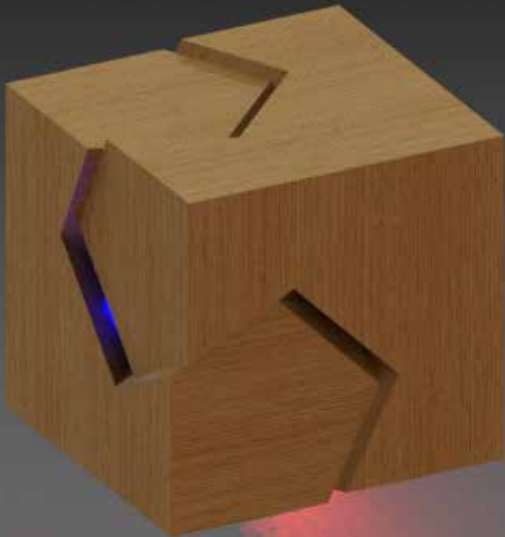
Kawai is an interactive lamp, inspired by colored light and Japanese joinery. A lamp designed to give the beholder the possibility to adjust the light and colors emitting from it.

Filip Cassergren

Stockholm, Sverige

cassergren\_filip@hotmail.com

+47 47373969





Hannah Duddy  
Edinburgh, Scotland  
hannahduddy@gmail.com  
+44 7454763064

## 05 Socialight

Influenced by the social effects that man-made light can have in a natural outdoor environment, Socialight serves as a centre point for group activity. The magnetic modules can be removed to distribute white light around the living room or combined to give off a warm ambient glow.







Anders Fosshem

Drammen, Norway

[anders.fosshem@hotmail.com](mailto:anders.fosshem@hotmail.com)

+47 97722801

## 06 Luminance

Luminance is a reflective setup designed for the pedestrian underpass “Greyshot Arch” in Central park, New York, USA. “Luminance” is a provider of natural light into the tunnel using different kinds of reflectors, where the sun is used as the light-source. Who goes to the park in the night or on a rainy day?



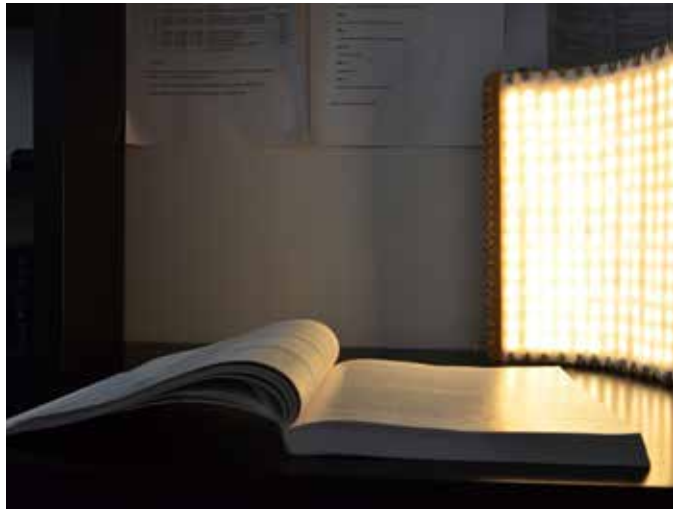


## 07 Crafty

Crafty is a multifunctional desk lamp made from sustainable materials. With its flexible surface you can carry it with you in your bag to school, work or wherever you may need a reading light.

Andrea Lindberg  
Fredrikstad, Norway  
aelind2@gmail.com  
+47 90186561

Daniel Kvebæk  
Karmøy, Norway  
Daniel.kvebaek@hotmail.com  
+47 91809827





Erik Harmens  
Oslo, Norway  
ehharmens@gmail.com  
+47 90214222

## 08 Lenio

Feeling stressed? When was the last time you took a deep breath? Breathing is something we do and rarely think about unless it becomes restricted. Take control, focus on your breath and release stress. Breathe with me...





Karina Hyland  
Santiago, Chile  
khyland@uc.cl  
+56 89216002

## 09 Lightphone

A phone that turns your voice into light. Maintain a conversation only by watching how your partner's light flashes in response. When language is removed it doesn't matter where you come from; light can be a means of communication for everyone.





Kristian Hynne  
Kodal, Norway  
krhynne@hotmail.com  
+47 99525018

## 10 Stack

Stack is made to be flexible and interactive. It is a stackable lamp that lets you use each module the way you like. By removing the pieces from each other, the modules light up. If you stack the pieces together, the light goes out.

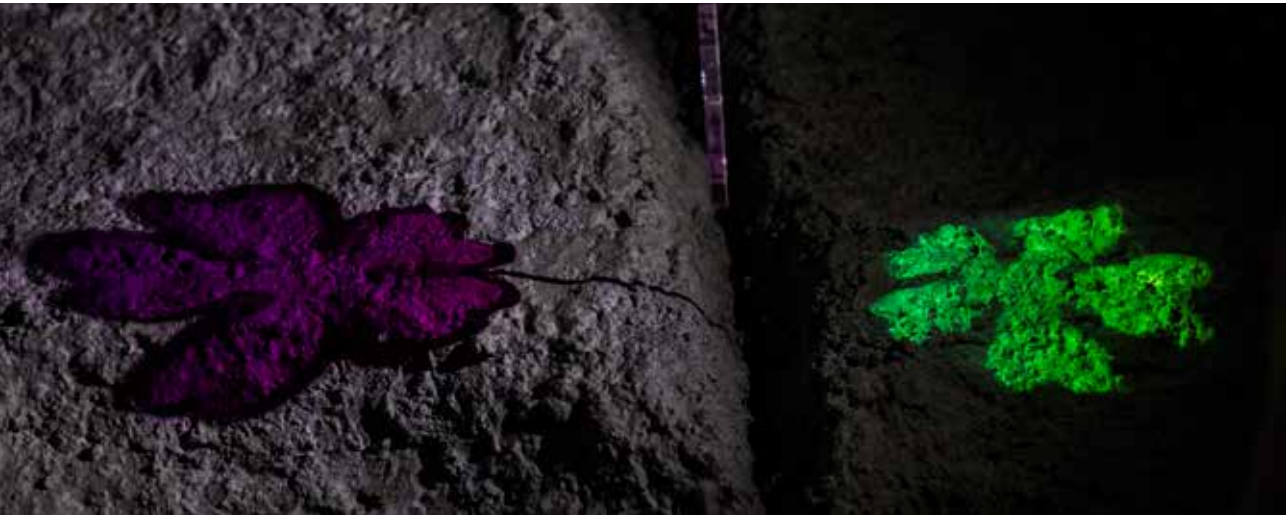
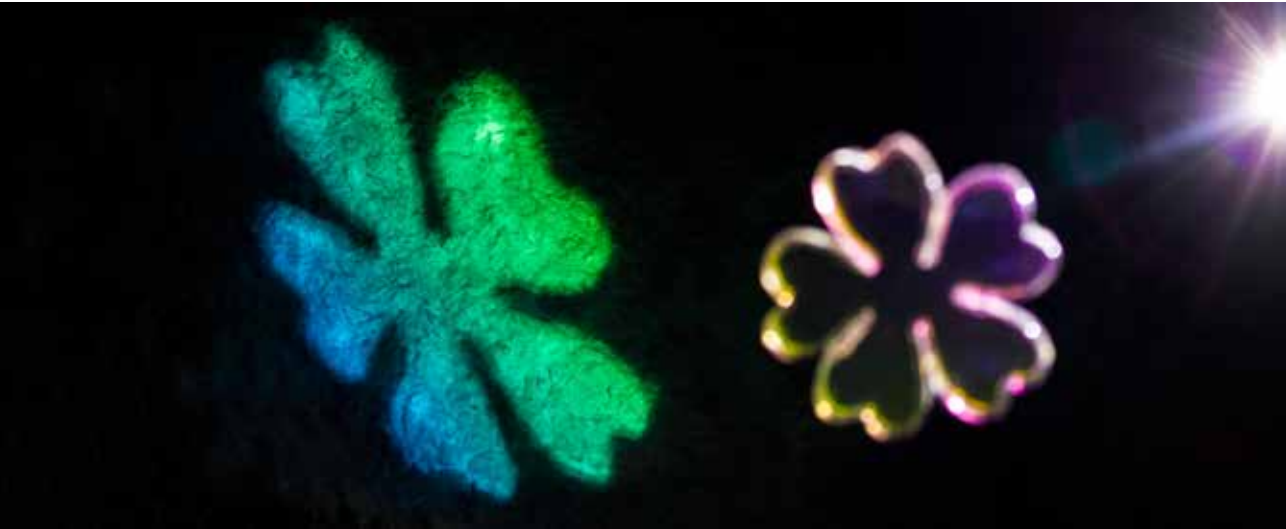




# 11 Dixzi

Dixzi is a light installation made for a roundabout in the city Lillesand. The roundabout is surrounded by a mountain wall, which the installation is reflected onto, with its dichroic effect. Which colors appear? You need to experience it for yourself.

Ida Malene Jacobsen  
Lillesand, Norway  
idamalenej@gmail.com  
+47 45231718





Kaja Bystøl Jacobsen  
Oslo, Norway  
kajabystol@gmail.com  
+47 95949596

## 12 Illuminated bench

Parks at night often feel unsafe- a place you like to avoid, or rush through. With illuminated benches as a reference and focus point, I want to make public parks appear safer and become a natural place to meet up. Let's make more vibrant urban spaces.





# 13 Roomy

From small to big, from public to personal. With Roomy's playful features, you can open, twist, bend and close it in different positions. Customize your light source and create your own personal space - wherever you are.

Izelin Tujunen  
Oslo, Norway  
izelintujunen@gmail.com  
+47 93219970

Anniken Sunde Frich  
Oslo, Norway  
anniken.sf@hotmail.com  
+47 40496983







Lars Kvinnesland  
Tananger, Norway  
larsf2@gmail.com  
+47 90819082

## 14 MTL Outdoor

MTL Outdoor is an outdoor motion tracking light (MTL). The function of the light is simply to follow the user's movement, while giving enough light for the user to navigate through the terrain. MTL Outdoor uses natural materials to blend into environments.





# 15 Slip

Slip is an interactive lamp, which allows you to achieve proper lighting for your activities. Adjust the inner tube and you'll get the amount of light you need. As simple as that, you can change your feeling of space.

Siri Line  
Holmestrand, Norway  
siri\_line@hotmail.com  
+47 90739229





Maria Løland  
Ålgård, Norway  
maria.loeland@gmail.com  
+47 93800765

## 16 Reflexión

Reflexión encourages reflection on environmental changes and multicultural environment in Norway. The multicultural component is represented through my second country, Colombia. The mountain made of coloured transparent glass is a symbol of both nations. Engraved with national patterns, the light installation will light up the area using natural light and mirrors.





## 17 Conduit

Conduit is a reading lamp designed to take you to a calmer place. It's unique switch from off to on creates a challenge which, with a small investment of time, is gratifying to overcome.

William Mason

Brisbane, Australia

[william.mb.mason@gmail.com](mailto:william.mb.mason@gmail.com)

+61 93440102





# 18 Melatonin

Inspired by the sun and how it affects our circadian rhythms, this light display is designed to mimic the calming glow and atmosphere of a sunset. The glow of the orange light increases your melatonin levels resulting in you feeling more relaxed and naturally preparing your body to fall asleep.

Zoë McClatchey

Banchory, Scotland

[zoe.mcclatchey@btinternet.com](mailto:zoe.mcclatchey@btinternet.com)

+44 7947979032





# 19 Layers

Inspired by old traditional symbols. An eternal flame that will remind you to put everything away for a while. Take a break, and get your energy back.

Guro Sørbo Midtun  
Hamar, Norway  
gsmidtun@gmail.com  
+47 46425714

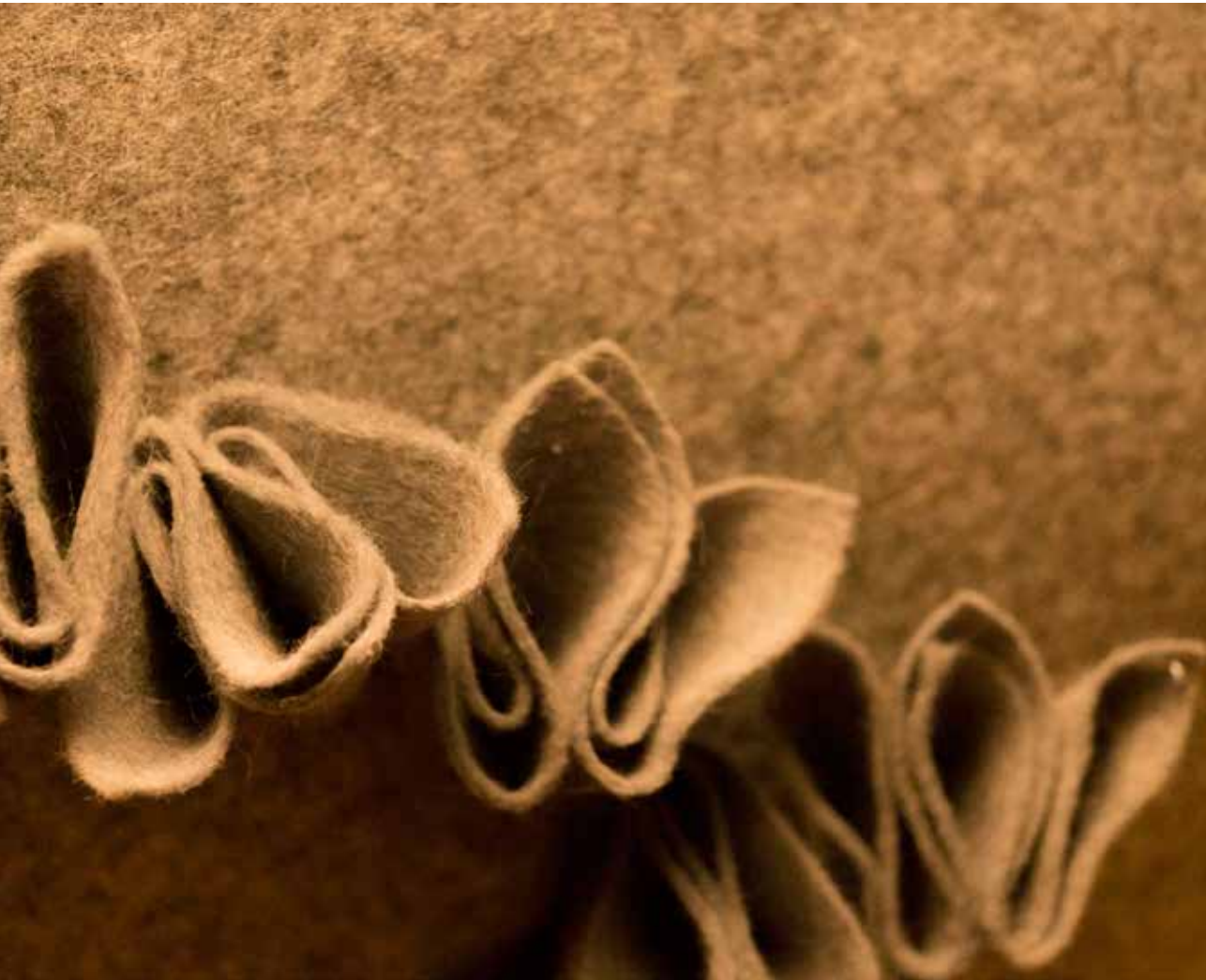




Malin Medin  
Bærum, Norge  
malinbm@online.no  
+47 92458656

## 20 Silent Light

In a work environment it is important for there to be good lighting and acoustics. Combining both light and sound absorption Silent Light is a multifunctional lamp for the work space.





21 03:14

This clock filters light, creating different colours throughout the day. It also gradually dims the light from brightest at noon to darkest at midnight and vice versa. It gives you a notion that, even though the moment is intangible and volatile, it is at the same time ever present and is always changing.

Jone Myking

Asker, Norway

[jonemyking@gmail.com](mailto:jonemyking@gmail.com)

+47 48366553







## 22 Umbra

Are you that person who always walks with your eyes glued to your phone? Umbra is inspired by the negative light in the forest. A shadow play that gives you a break from your daily life. Look around!

Hamy Nguyen

Lillestrøm, Norway

hamynguyenn@gmail.com

+47 48077571





Elias Dahl Olsen  
Asker, Norway  
eliasolse1@gmail.com  
+47 48231099

## 23 Spinning Jenny

A lamp inspired by the spinning jenny, by kicking the pedal the user creates motion, which powers the lamp by a dynamo powered by a belt. With interaction the user can create light for a small space.





## 24 CU-Log

Inspired by graffiti - Its purpose is to express personality, substantiate memories and embrace the human need to leave a mark behind. A colour-sensor scans your clothes while sitting on it and CU-Log lights up in the same colour. It sees you - confirms you - and remembers you.

Anna Richardson

Duved / Åre, Sweden

[anna.k.richardson@gmail.com](mailto:anna.k.richardson@gmail.com)

+47 92848456





Sunniva Prytz Sandnes  
Røros, Norway  
sunn.p.sand@gmail.com  
+47 47442437

## 25 Take part

The illustrations used in my product series are a response to a poster distributed by the Tøyen campaign. The main message of the poster is that everyone has something to contribute to the Tøyen community. So take part.

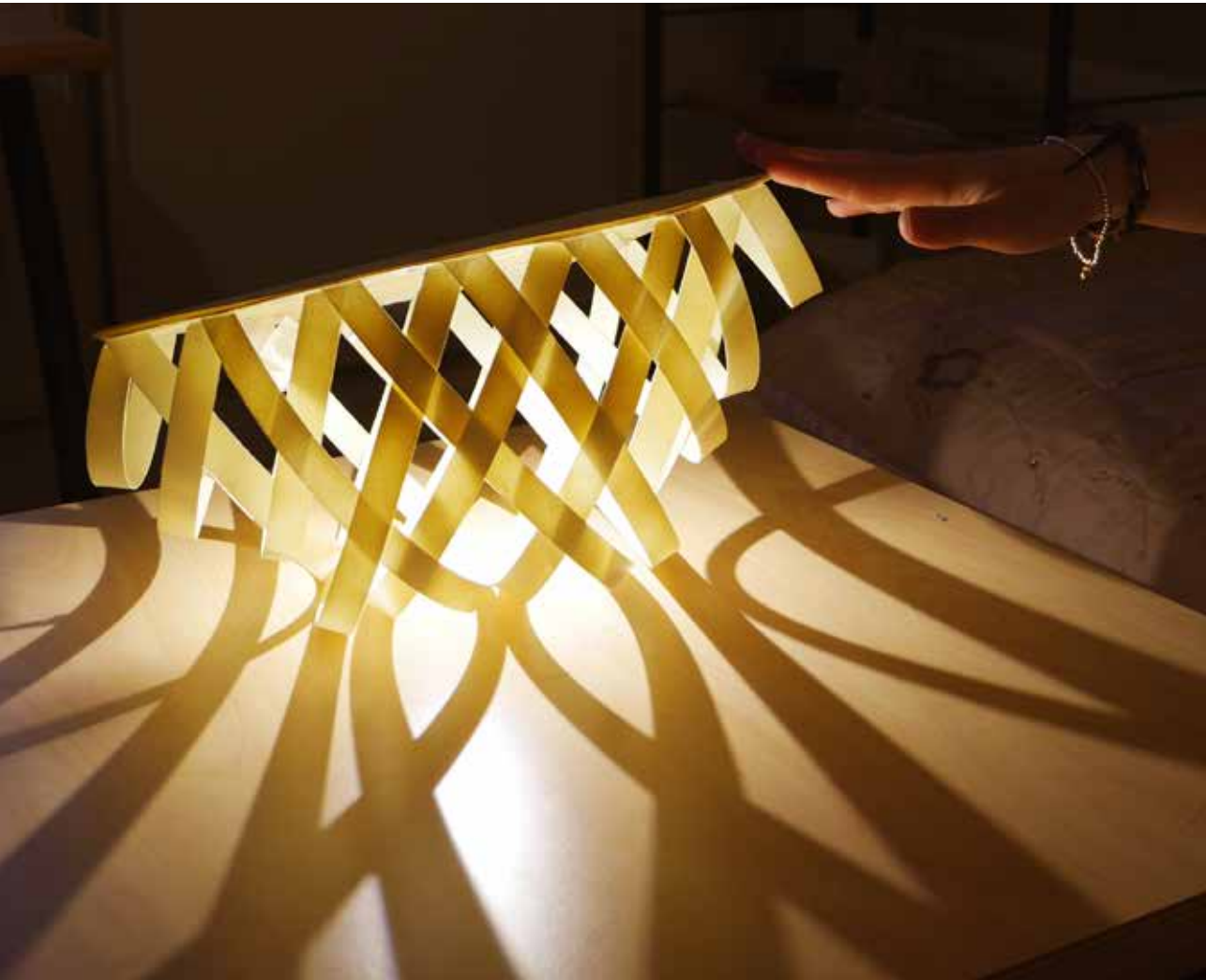




Jenny Smith  
Vitoria, Spain  
jesmith.lisa@gmail.com  
+34 627754376

## 26 Tilt

Tilt is an interactive lamp. The user activates its movement to create a shadow patterning show that resembles the mysterious and intriguing atmosphere of a Film Noir scene, and it can be enjoyed in their own home. The rocking motion and the pattern give the sensation of waves colliding, holding a resemblance to the seafront.





Anne Marthe Strand  
Kristiansund, Norway  
annestrand1@live.no  
+47 98341442

## 27 Åsynjer

A natural formation of locally anchored stone, harvesting energy from the sun to display a mystical light show from dusk till dawn. Dependent on the sun to function, but comes alive only at night. Environmentally friendly, interactive and long lasting. Just like nature intended.



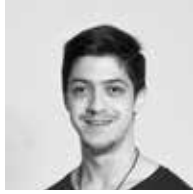


Linnea Thalerud  
Krødsherad, Norway  
linnea\_thalerud@hotmail.com  
+47 97612525

## 28 Rangoli

Rangoli is the lamp that combines Norway, India and New York. Patterns which appear with the lamp lighting up will make you live the experience of exploring different cultures just sitting in your living room. Rangoli is the way to show how beautiful different cultures can become together.





Serhat Turan  
Oslo, Norway  
serhat-t@hotmail.com  
+47 40058108

## 29 Daily

Surveys show that people are working more effectively and oriented with the presence of daylight. Daylight in the workplace increases energy and stimulates concentration in humans, and this product contributes to supply it.







Gintare Visniauskaite  
Oslo, Norway  
visniauskaite.gintare3@gmail.com  
+47 46595546

## 30 Shelter

The idea is to find a way to express a concordance encounter between two opposites: nature and civilization. The tree root represents wild beauty of nature while the illuminated sphere is inspired by the Victorian era's organic shapes. Together they create a consonance that exists only in nature.





Elin Våg  
Tysvær, Norway  
elin.vag@gmail.com  
+47 90649925

## 31 Tall

Tall is an adjustable lamp which stretches from the floor to the roof. It is a variation of the traditional spotlight system, inspired by Scandinavian design. The spots are flexible in height and can be turned to spread and reflect light. It also functions as a reading lamp.

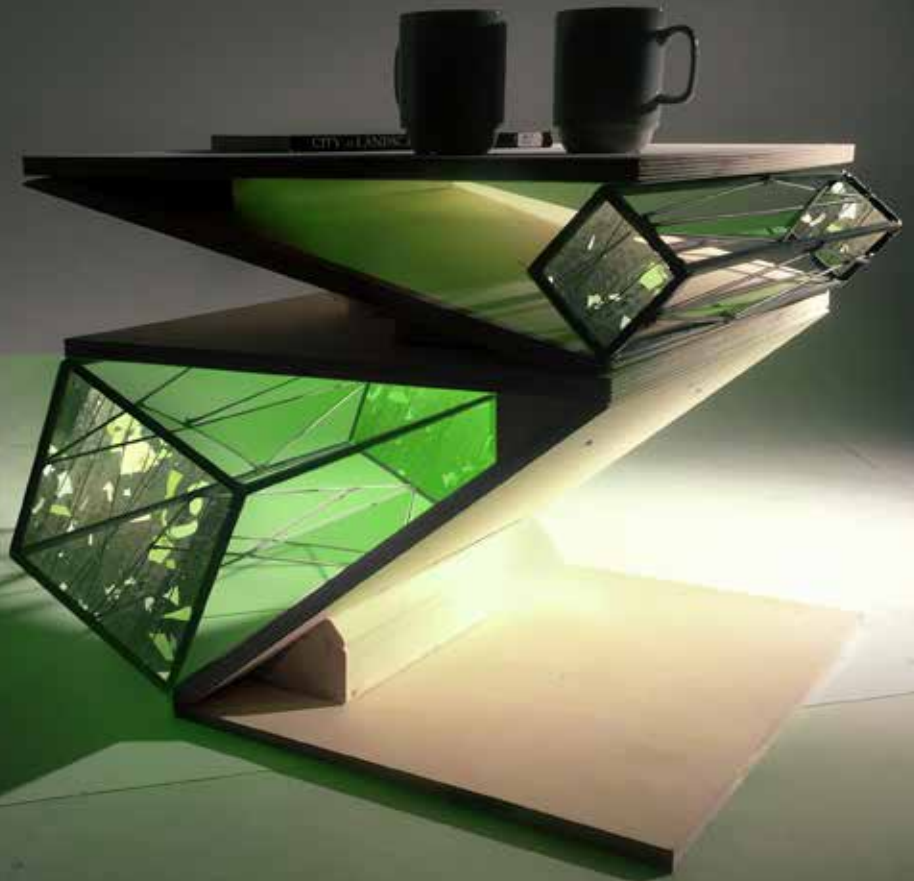




Darja Vinogradova  
Sillamäe, Estonia  
vidashy@hotmail.com  
+37 255517720

## 32 Norangle

Norangle low table follows the emotions from different angles. The lighting effects from the bottom lead to a relaxing atmosphere and create the feeling of a magical place, while shelves between have a mysterious appearance. The abstraction is inspired by Olafur Eliasson's installation "The Other Wall" in the Oslo Opera House.





## 33 Lotus

The lotus flower is symbolic of fortune in Buddhist culture. Similar to the design process, it grows in muddy water, and it is this environment that gives forth the flower's first and most literal meaning: Rising and blooming above the murk to achieve enlightenment.

Fredrik Våland  
Stavanger, Norway

fredrik.valand@gmail.com

+47 47381194





Steffen Weiß

Ulm, Germany

steffen.weiss@hfg-gmuend.de

+49 15154253708

## 34 Atramentum

Atramentum is a room installation providing a potential first-time experience for you. Get in the box and take your time. Calm down, relax and start enjoying and embracing darkness around you in this light-polluted world. It invites you to find your own rhythm and forget about the busyness around you for a moment.





Karoline Skeide Pettersen  
Sandefjord, Norway  
Karoline\_Spettersen@hotmail.com  
+w47 90149949

## 35 Moon Light

Moon Light is a table lamp inspired by the moon's light and appearance. The warm light lowers your stress levels and soothes the body. It increases your melatonin levels which makes you sleepy in a natural way.

«I am a fairy of moonlight!» -Sleep tight moonbeam.





---

*thank you!*







# *special thanks to*

---

Ronny Bubba Haugen Sandberg

Magnor Glassverk

Tøyenkampanjen

Stig Skjelvik

Chatrine Maske

Martina Keitsch

## **Teachers and staff:**

Kyrre Andersen

Astrid Skjerven

Nils Seiersten

Sigrid Haugen

Julia Jacoby

Julius Jacoby

# *the designers*

---

01. Andrea Marian Bue Andersen
02. Sofie Marie Blattmann
03. Viktoria Brønlund
04. Filip Cassergren
05. Hannah Duddy
06. Anders Fossheim
07. Andrea Lindberg,  
Daniel Kvebæk
08. Erik Harmens
09. Karina Hyland
10. Kristian Hynne
11. Ida Malene Jacobsen
12. Kaja Bystøl Jacobsen
13. Izelin Tujunen,  
Anniken Sunde Frich
14. Lars Kvinnesland
15. Siri Line
16. Maria Løland
17. William Mason
18. Zoë McClatchey
19. Guro Sørbo Midtun
20. Malin Medin
21. Jone Myking
22. Hamy Nguyen
23. Elias Dahl Olsen
24. Anna Richardson
25. Sunniva Prytz Sandnes
26. Jenny Smith
27. Anne Marthe Strand
28. Linnea Thalerud
29. Serhat Turan
30. Gintare Visniauskaite
31. Elin Våg
32. Darja Vinogradova
33. Fredrik Våland
34. Steffen Weiß
35. Karoline Skeide Pettersen



**D&A**

NORSK DESIGN- OG ARKITEKTURSENTER



OSLO AND AKERSHUS  
UNIVERSITY COLLEGE  
OF APPLIED SCIENCES