



# A survey of local diagnostic reference levels for the head, thorax, abdomen and pelvis computed tomography in Norway and Canada

Acta Radiologica Open  
11(10) 1–11  
© The Author(s) 2022  
Article reuse guidelines:  
[sagepub.com/journals-permissions](https://sagepub.com/journals-permissions)  
DOI: 10.1177/20584601221131477  
[journals.sagepub.com/home/arr](https://journals.sagepub.com/home/arr)  


Elena Tonkopi<sup>1,2,3</sup>, Eline Jahre Wikan<sup>4</sup>, Tor Olav Hovland<sup>4</sup>, Sivert Høgset<sup>4</sup>, Thomas Alexander Kofod<sup>4</sup>, Selasi K Sefenu<sup>4</sup>, Emily Hughes-Ryan<sup>5</sup>, Dakota d'Entremont-O'Connell<sup>5</sup>, Catherine Gunn<sup>2,5</sup>, Tanja Holter<sup>6</sup> and Safora Johansen<sup>4,7</sup> 

## Abstract

**Background:** Computed tomography (CT) contributes to 60% of the collective dose in medical imaging. Literature has demonstrated that patient dose varies across regions and countries. Establishing diagnostic reference levels (DRLs) contributes to the optimization of clinical practices and radiation protection.

**Purpose:** To survey the dose indices (CTDI<sub>vol</sub> and dose-length product) for frequently performed CT examinations from the chosen hospitals in Norway and Canada and to determine local DRLs (LDRLs) based on the collected data.

**Material and Methods:** The survey included eight scanners from two Norwegian hospitals and four scanners from four Canadian hospitals. Dosimetry data were collected for the following routine CT examinations: head, contrast-enhanced thorax, and abdomen and pelvis. Overall 480 adult average-sized patients from Norway and 360 from Canada were included in the survey. The LDRLs were determined as the 75th percentile of distributions of median values of dose indicators from different CT scanners. The differences in dose between scanners were determined using single-factor ANOVA.

**Results:** The LDRLs determined in Norway were higher overall than in Canada. The obtained values were compared to the national DRLs. The dose from several scanners in Norway exceeded national Norwegian DRLs, while Canadian LDRLs were below the Canadian reference levels. The differences between the means of the dose distributions from each scanner were statistically significant ( $p < 0.05$ ) for all examinations with exception of identical scanners located in the same hospital and using the same protocols.

**Conclusion:** Observed dose variations even in the same hospital, or from the same scanner model confirmed the need for CT protocol optimization.

## Keywords

CT dosimetry, diagnostic reference levels

Received 24 June 2022; accepted 22 September 2022

<sup>1</sup>Department of Diagnostic Imaging, Nova Scotia Health Authority, Halifax, NS, Canada

<sup>2</sup>Department of Radiation Oncology, Dalhousie University, Halifax, NS, Canada

<sup>3</sup>Department of Diagnostic Radiology, Dalhousie University, Halifax, NS, Canada

<sup>4</sup>Health faculty, Oslo Metropolitan University, Oslo, Norway

<sup>5</sup>School of Health Sciences, Dalhousie University, Halifax, NS, Canada

<sup>6</sup>Department of Physics and Computational Radiology, Oslo University Hospital, Oslo Norway

<sup>7</sup>Department of Cancer Treatment, Oslo University Hospital, Oslo, Norway

## Corresponding author:

Safora Johansen, Oslo Metropolitan University and Oslo Hospital, Pilestredet 48, Oslo 0130, Norway.

Email: [Safora.johansen@oslomet.no](mailto:Safora.johansen@oslomet.no)



Creative Commons Non Commercial CC BY-NC: This article is distributed under the terms of the Creative Commons Attribution-NonCommercial 4.0 License (<https://creativecommons.org/licenses/by-nc/4.0/>) which permits non-commercial use, reproduction and distribution of the work without further permission provided the original work is attributed as specified on the SAGE and Open Access pages (<https://us.sagepub.com/en-us/nam/open-access-at-sage>).

## Introduction

In recent years, computed tomography (CT) has expanded immensely due to the accuracy and reliability of detecting disease.<sup>1</sup> Given its continuous evolution, CT remains a valuable and indispensable tool for diagnosing abounding diseases within medical imaging.<sup>2,3</sup> The radiation exposure received by a patient is considered intentional because the radiation is used to obtain the necessary information to complete the diagnosis.<sup>4</sup> Still, CT scans can contribute up to 60% of the collective dose in medical imaging, which is disproportionate to the number of scans performed.<sup>5</sup> Literature has demonstrated that patient dose varies across regions and countries due to several factors, including CT scanner design, diagnostic protocols, and local-based choices of technical parameters.<sup>6</sup> Therefore, opportunities exist for optimization to ensure that patients do not receive unnecessarily high doses of ionizing radiation.<sup>7,8</sup>

Diagnostic reference levels (DRLs) are used in medical imaging to optimize clinical examinations. In accordance with the International Commission on Radiological Protection (ICRP), DRLs are applied to an easily measured quantity.<sup>9</sup> In CT such quantities are specific dosimetry indices, volume CT dose index (CTDI<sub>vol</sub>) and dose-length product (DLP). DRLs are typically set at the 75th percentile of the distribution of the quantity obtained from the surveys. DRLs can facilitate the identification of abnormally high doses within specific institutions allowing hospitals to compare patient doses for CT examinations, and if median doses exceed these DRLs, it can help to identify how the facility can benefit from optimization.<sup>9,10</sup> It has been shown that there is a reduction of dose in the clinical setting with the implementation of DRLs.<sup>11</sup>

Many countries have implemented National DRLs (NDRL) and Local DRLs (LDRL), which have demonstrated a reduction in patient dose over time.<sup>12,13</sup> National reference levels in CT were established in 2018 in Norway<sup>14</sup> and in 2016 in Canada.<sup>15</sup> The diagnostic imaging department can use NDRLs and LDRLs as a guide to optimizing CT scanning protocols according to patient characteristics to reduce patient dose to meet the 'as low as reasonably achievable' (ALARA) principle while maintaining acceptable image quality.<sup>5</sup> Both, Canada and Norway have similar health care systems, therefore a comparison of clinical practices will provide valuable suggestions for CT dose and protocol optimization.

This study aims to survey dose indices (CTDI<sub>vol</sub> and DLP) for frequently performed CT examinations from the chosen hospitals in Norway and Canada and to determine local DRLs based on the collected dosimetry data.

## Materials and methods

### *Computed tomography scanners*

The chosen CT scanners included eight scanners from the two largest hospitals in Oslo, Norway, and four scanners

from four hospitals located in different parts of the province of Nova Scotia, Canada. In the survey, there are eight different CT models represented by three manufacturers: GE Healthcare (Waukesha WI, USA), Siemens Healthineers (Erlangen, Germany), and Canon Medical System (Ottawa, Japan). The majority of the scanners, with exception of Optima CT660, are capable of acquiring 128 or higher slices in one rotation. All but one, Definition Edge, Siemens scanners are dual-source CT equipped with two x-ray tubes. The characteristics of the scanners are shown in [Table 1](#).

### *Patients population*

The dose survey included three routine examinations: non-enhanced head, contrast-enhanced thorax, and contrast-enhanced scan of the abdomen and pelvis. Details of the protocols for each scanner are summarized in [Table 2](#). All examinations were performed in 2021 except for the abdomen and pelvis from Aquilion One in Norway. Data collection for this scanner dates to October 2018 because an insufficient number of examinations were performed in 2021. The data were collected and analyzed from January to May 2022. In Norway, data were collected from a total of 480 adult patients, 20 patients per protocol from each scanner. In Canada, data collected included a total of 360 adult patients, 30 patients per protocol. This study includes data from standard protocols for average size adult patients. All patients were considered average size for CT head protocols due to minimal size variation. However, while sampling patients for head exams from both Norway and Canada, cases were excluded if a significant amount of streaking was present within the exam due to dental work such as fillings, crowns, or implants. In addition, head exams were also excluded if they demonstrated severe malpositioning, such as heads turned laterally. For the abdomen and pelvis examination, only patients with a weight of  $70 \pm 20$  kg were included in the survey. For thorax examinations, the patient weight is not recorded, therefore average-sized patients were chosen based on the anterior-posterior (AP) thickness measured on the images. The inclusion range of the thicknesses was 20–30 cm measured at the carina.<sup>16</sup> The patients with a weight or thickness outside of the indicated ranges were excluded from the survey as well as patients who were not examined with the standard CT protocol.

### *Data analysis*

Data were collected retrospectively from Picture Archiving and Communication Systems (PACS) and contained the CTDI<sub>vol</sub>, mGy, and DLP, mGy·cm, from each patient study in the survey. The following PACS solutions were employed in Norway and Canada respectively: Sectra IDS7, Version 20.2 (Linköping, Sweden) and Agfa Impax, Version

**Table 1.** Characteristics of the CT scanners included in the survey.

| Hospital | Manufacturer | Model                          | Install year | Detector configuration <sup>a</sup> | Iterative reconstruction |
|----------|--------------|--------------------------------|--------------|-------------------------------------|--------------------------|
| Norway   |              |                                |              |                                     |                          |
| 1        | Siemens      | <sup>DS</sup> Somatom force    | 2019         | 2 · 96 × 0.6 mm                     | ADMIRE                   |
|          | Siemens      | <sup>DS</sup> Somatom Force    | 2017         | 2 · 96 × 0.6 mm                     | ADMIRE                   |
| 2        | Canon        | Aquilion One                   | 2015         | 320 × 0.5 mm                        | AIDR                     |
|          | Siemens      | <sup>DS</sup> Somatom Force    | 2020         | 2 · 96 × 0.6 mm                     | ADMIRE                   |
|          | Siemens      | <sup>DS</sup> Somatom Drive    | 2016         | 2 · 64 × 0.6 mm                     | ADMIRE                   |
|          | Siemens      | <sup>DS</sup> Definition Flash | 2012         | 2 · 64 × 0.6 mm                     | SAFIRE                   |
|          | GE           | Revolution                     | 2018         | 256 × 0.625 mm                      | ASiR-V, DLIR             |
|          | GE           | Revolution Apex                | 2018         | 256 × 0.625 mm                      | ASiR-V, DLIR             |
| Canada   |              |                                |              |                                     |                          |
| 3        | Siemens      | Definition Edge                | 2018         | 2 · 64 × 0.6 mm                     | SAFIRE                   |
| 4        | Siemens      | <sup>DS</sup> Definition Flash | 2011         | 2 · 64 × 0.6 mm                     | SAFIRE                   |
| 5        | GE           | Optima CT660                   | 2013         | 64 × 0.625                          | ASiR                     |
| 6        | GE           | Optima CT660                   | 2012         | 64 × 0.625                          | ASiR                     |

Superscript DS indicates a dual-source.

<sup>a</sup>Notation of the detector configuration: the number of active detector rows × the detector element thickness; an additional factor of 2 indicates that a z-flying focal spot is used to double the number of slices acquired in one rotation.

6.6.1.6014 (Agfa HealthCare, Mortsels, Belgium). The analysis of collected data was performed using Microsoft Excel 2019 (Microsoft Corporation, Redmond, WA, USA). Descriptive statistical analysis of the collected dosimetry parameters CTDI<sub>vol</sub> and DLP were performed for each CT scanner and each type of examination. The differences in radiation doses between scanners were determined using a single-factor ANOVA statistical test, with  $p < 0.05$  indicating statistical significance. The ANOVA test was performed using Excel for each examination from all scanners, and also separately for the Canadian and Norwegian CTs, as well as for the groups consisting of the same scanner models, or the scanners using identical protocols (Table 2). According to the ICRP recommendations, the DRLs for the selected CT examinations were determined as the 75th percentile of distributions of median values of dose values from different CT scanners.<sup>9</sup> The results represent the local reference levels for each country included in this study. These were compared with NDRLs for Norway<sup>14</sup> and Canada<sup>15</sup> and data from the United States of America (USA),<sup>17</sup> Switzerland<sup>18</sup> the United Kingdom,<sup>19</sup> France,<sup>20</sup> and Australia<sup>21</sup> to represent an international set of NDRLs. It is important to mention that there is no set NDRL for abdomen and pelvis examinations in Norway.

## Results

The exposure parameters for all protocols from each scanner are listed in Table 2. All considered examinations, except the head CT on Aquilion One, used helical scanning and implemented Automated Exposure Control. Aquilion One utilized a 16 mm wide dynamic volume scan allowing to image head (brain) in one rotation. All

scanners included in the survey employed iterative image reconstruction techniques specific to the model and the manufacturer.

Table 3 summarizes the descriptive statistical analysis results, demonstrating the mean values, standard deviations, and the min/max ranges. The median values of the dose indicators are plotted in Figures 1–3. The Norwegian local reference levels (LDRLs) for the CTDI<sub>vol</sub> values are 54 mGy, 10.4 mGy, and 13 mGy for the head, thorax, and abdomen and pelvis examinations, respectively. The corresponding DLP values are 962 mGy·cm, 393 mGy·cm, and 701 mGy·cm. In Canada the LDRLs for the same examinations were 9%–32% lower with the following values: 44 mGy, 9.5 mGy, and 10.2 mGy for the CTDI<sub>vol</sub>, and 815 mGy·cm, 319 mGy·cm, and 476 mGy·cm for the DLP values. For a majority of individual scanners from both countries, the median dose values are lower than the corresponding LDRs, up to 40% (Optima CT660<sup>2013</sup>) for the abdomen and pelvis and 56% (Aquilion One<sup>2015</sup>) for the thorax examinations. In general, there is less variability for the head examination with the scanner's median values within 23% of the LDRLs, due to lower patient and protocol variability (Table 2, Figure 1). For the body scans in Norway, hospital # 2 demonstrated overall higher doses than hospital # 1 with the median values differences up to 29% for the abdomen and pelvis and 44% for the thorax. The largest CTD<sub>vol</sub> values for both examinations were obtained from the Definition Flash<sup>2012</sup> scanner (Figures 2(b) and 3(b)), and the highest DLP values were collected from the Revolution<sup>2018</sup> for the thorax and Revolution Apex<sup>2018</sup> for the abdomen and pelvis examinations (Figures 2(a) and 3(a)). The lowest doses in Norway were obtained from the Aquilion One<sup>2015</sup> for the thorax (Figure 2) and Somatom

**Table 2.** Acquisition parameters for CT examinations on each scanner.

| Hospital                  | Scanner                                   | Tube voltage                    | AEC settings                    | Slice (mm) | Pitch | Rotation time (s) |
|---------------------------|---|---------------------------------|---------------------------------|------------|-------|-------------------|
| <b>Head</b>               |   |                                 |                                 |            |       |                   |
| 1                         | Somatom Force <sup>2019</sup>             | 120 Ref kV, Care kV             | 450 Ref mAs                     | 0.6        | 0.55  | 1                 |
|                           | Somatom Force <sup>2017</sup>             |                                 |                                 |            |       |                   |
|                           | *Aquilion One <sup>2015</sup>             |                                 |                                 |            |       |                   |
| 2                         | Somatom force <sup>2020</sup>             | 120 kV                          | 390 Ref mAs                     | 0.6        | 0.55  | 1                 |
|                           | Somatom Drive <sup>2016</sup>             |                                 |                                 |            |       |                   |
|                           | Definition Flash <sup>2012</sup>          |                                 |                                 |            |       |                   |
| 3                         | Revolution <sup>2018</sup>                | 120 kV                          | min/max: 100/340 mA, NI = 6     | 0.625      | 0.516 | 0.6               |
|                           | Revolution Apex <sup>2018</sup>           |                                 |                                 |            |       |                   |
|                           | Definition Edge <sup>2018</sup>           |                                 |                                 |            |       |                   |
| 4                         | Definition Flash <sup>2011</sup>          | 120 Ref kV, Care kV             | 350 Ref mAs                     | 0.6        | 0.55  | 1                 |
| 5                         | Optima CT660 <sup>2013</sup>              | 120 kV                          | Fixed 380 mA                    | 0.625      | 0.516 | 0.6               |
| 6                         | Optima CT660 <sup>2012</sup>              | 120 kV                          | Fixed 200 mA                    | 0.625      | 0.531 | 1                 |
| <b>Thorax</b>             |   |                                 |                                 |            |       |                   |
| 1                         | Somatom Force <sup>2019</sup>             | 120 Ref kV, Care kV             | 130 Ref mAs                     | 0.6        | 2.5   | 0.25              |
|                           | Somatom Force <sup>2017</sup>             |                                 |                                 |            |       |                   |
|                           | <sup>a</sup> Aquilion One <sup>2015</sup> |                                 |                                 |            |       |                   |
| 2                         | Somatom Force <sup>2020</sup>             | 120 Ref kV, Care kV             | 120 Ref mAs                     | 0.6        | 0.6   | 0.5               |
|                           | Somatom Drive <sup>2016</sup>             |                                 |                                 |            |       |                   |
|                           | Definition Flash <sup>2012</sup>          |                                 |                                 |            |       |                   |
| 3                         | Revolution <sup>2018</sup>                | 80–120 kV, kV Assist            | min/max: 80/500 mA, NI = 32     | 0.625      | 0.508 | 0.5               |
|                           | Revolution Apex <sup>2018</sup>           |                                 |                                 |            |       |                   |
|                           | Definition Edge <sup>2018</sup>           |                                 |                                 |            |       |                   |
| 4                         | Definition Flash <sup>2011</sup>          | 120 Ref kV, Care kV             | 70 Ref mAs                      | 0.6        | 0.6   | 0.5               |
| 5                         | Optima CT660 <sup>2013</sup>              | 120 kV                          | min/max: 50/500 mA, NI = 13.88  | 0.625      | 1.35  | 0.8               |
| 6                         | Optima CT660 <sup>2012</sup>              | 120 kV                          | min/max: 100/500 mA, NI = 26.00 | 0.625      | 0.984 | 0.6               |
| <b>Abdomen and pelvis</b> |   |                                 |                                 |            |       |                   |
| 1                         | Somatom Force <sup>2019</sup>             | Tube A: 90 kV<br>Tube B: 150 kV | 220 Ref mAs                     | 0.6        | 0.6   | 0.5               |
|                           | Somatom Force <sup>2017</sup>             |                                 |                                 |            |       |                   |
|                           | Aquilion One <sup>2015</sup>              |                                 |                                 |            |       |                   |
| 2                         | Somatom Force <sup>2020</sup>             | 120 Ref kV<br>Semi kV           | 210 Ref mAs                     | 0.6        | 0.6   | 0.5               |
|                           | Somatom Drive <sup>2016</sup>             |                                 |                                 |            |       |                   |
|                           | Definition Flash <sup>2012</sup>          |                                 |                                 |            |       |                   |
| 3                         | Revolution <sup>2018</sup>                | 100–120 kV, kV Assist           | min/max: 150/900 mA, NI = 29    | 0.625      | 0.508 | 0.5               |
|                           | Revolution Apex <sup>2018</sup>           |                                 |                                 |            |       |                   |
|                           | Definition Edge <sup>2018</sup>           |                                 |                                 |            |       |                   |
| 4                         | Definition Flash <sup>2011</sup>          | 120 Ref kV, Care kV             | 185 Ref mAs                     | 0.6        | 0.6   | 0.5               |
| 5                         | Optima CT660 <sup>2013</sup>              | 120 kV                          | min/max: 50/560 mA, NI = 12.31  | 0.625      | 1.375 | 0.8               |
| 6                         | Optima CT660 <sup>2012</sup>              | 120 kV                          | min/max: 100/500 mA, NI = 24.00 | 0.625      | 0.984 | 0.8               |

<sup>a</sup>Dynamic volume scan.

Force<sup>2017</sup> for the abdomen and pelvis (Figure 3). In Canada, Optima CT660<sup>2012</sup> had consistently the highest and Optima CT660<sup>2013</sup> the lowest dose indicators for both body examinations with the 2-fold differences between the median values (Figures 2 and 3).

The differences between the means of the dose distributions from each scanner were statistically significant ( $p < 0.05$ ) for all examinations not only between the countries but within the Canadian and Norwegian groups as well. Significant differences were also found between the mean values collected from the identical scanner

models located at different hospitals. However, for some examinations, the scanners from the same hospitals and using the same protocols demonstrated non-significant differences in doses ( $p > 0.05$ ). Thus, similar doses were collected from the two Somatom Force scanners in hospital # 1 with the  $p$ -values of 0.31, 0.74, and 0.90 for the head, thorax, and abdomen and pelvis examinations, respectively. Similarly, for the two GE scanners from hospital # 2,  $p = 0.12$  for the thorax and  $p = 0.62$  for the abdomen and pelvis, with a significant difference for the head examination.

**Table 3.** Results of statistical analysis showing the min/max range, the mean, and standard deviation for the CTDI<sub>vol</sub> and DLP values for all examinations on each scanner.

| Norway                           |                    |                        |                  |                      |                   |                                   |                                |
|----------------------------------|--------------------|------------------------|------------------|----------------------|-------------------|-----------------------------------|--------------------------------|
| CT scanner                       | Examination        | Mean AP thickness (cm) | Mean weight (kg) | Min/max DLP (mGy·cm) | Mean DLP (mGy·cm) | Min/max CTDI <sub>vol</sub> (mGy) | Mean CTDI <sub>vol</sub> (mGy) |
| Somatom Force <sup>2019</sup>    | Head               | —                      | —                | 790.2–1233.8         | 995.7 ± 110.5     | 29.4–65.5                         | 53.04 ± 7.2                    |
|                                  | Thorax             | 22.66 ± 1.39           | —                | 142.1–402.8          | 226.0 ± 61.5      | 4.2–9.2                           | 6.18 ± 1.12                    |
|                                  | Abdomen and pelvis | —                      | 71.30 ± 5.91     | 227.1–1206.3         | 519.6 ± 200.0     | 7.3–22.3                          | 10.04 ± 3.30                   |
| Somatom Force <sup>2017</sup>    | Head               | —                      | —                | 671.8–1187.8         | 959.2 ± 130.6     | 43.3–67.7                         | 53.06 ± 4.97                   |
|                                  | Thorax             | 22.83 ± 1.95           | —                | 112.6–300.0          | 220.3 ± 46.4      | 3.1–9.7                           | 6.43 ± 1.17                    |
|                                  | Abdomen and pelvis | —                      | 73.27 ± 9.88     | 294.2–1008.2         | 495.0 ± 157.8     | 7.1–17.9                          | 9.94 ± 2.50                    |
| Somatom Force <sup>2020</sup>    | Head               | —                      | —                | 550.6–899.2          | 733.3 ± 98.7      | 34.0–45.2                         | 40.06 ± 3.53                   |
|                                  | Thorax             | 24.01 ± 2.79           | —                | 168.9–718.1          | 327.0 ± 152.8     | 4.1–17.9                          | 8.79 ± 3.74                    |
|                                  | Abdomen and pelvis | —                      | 67.75 ± 9.67     | 368.7–1293.2         | 708.5 ± 302.7     | 7.7–24.8                          | 13.91 ± 5.30                   |
| Definition Flash <sup>2012</sup> | Head               | —                      | —                | 741.4–1214.5         | 939.6 ± 138.7     | 45.3–63.1                         | 52.95 ± 5.36                   |
|                                  | Thorax             | 23.24 ± 2.03           | —                | 219.0–574.7          | 414.3 ± 110.9     | 5.8–19.7                          | 12.52 ± 3.58                   |
|                                  | Abdomen and pelvis | —                      | 70.75 ± 9.22     | 476.0–912.3          | 687.4 ± 148.7     | 10.4–18.5                         | 13.81 ± 2.69                   |
| Somatom Drive <sup>2016</sup>    | Head               | —                      | —                | 696.1–956.5          | 801.2 ± 71.9      | 40.4–52.8                         | 46.23 ± 3.28                   |
|                                  | Thorax             | 22.65 ± 2.27           | —                | 258.0–686.2          | 413.8 ± 132.2     | 6.8–19.8                          | 11.52 ± 3.32                   |
|                                  | Abdomen and pelvis | —                      | 66.50 ± 9.19     | 406.4–1211.3         | 587.4 ± 178.6     | 8.7–23.0                          | 11.82 ± 3.08                   |
| Revolution <sup>2018</sup>       | Head               | —                      | —                | 704.7–1352.5         | 1065.6 ± 163.6    | 34.4–59.2                         | 52.43 ± 6.54                   |
|                                  | Thorax             | 23.81 ± 2.69           | —                | 206.2–900.4          | 459.1 ± 184.9     | 5.6–21.8                          | 11.62 ± 4.76                   |
|                                  | Abdomen and pelvis | —                      | 65.50 ± 8.57     | 433.6–1481.7         | 782.3 ± 264.3     | 10.1–28.0                         | 14.13 ± 4.30                   |
| Revolution Apex <sup>2018</sup>  | Head               | —                      | —                | 632.0–1254.9         | 913.6 ± 202.0     | 32.8–59.3                         | 44.53 ± 9.03                   |
|                                  | Thorax             | 23.71 ± 1.78           | —                | 232.2–762.6          | 381.8 ± 125.5     | 5.5–19.5                          | 9.74 ± 3.37                    |
|                                  | Abdomen and pelvis | —                      | 68.88 ± 8.69     | 520.1–1387.4         | 831.3 ± 297.7     | 10.6–25.3                         | 15.32 ± 4.67                   |
| Aquilion One <sup>2015</sup>     | Head               | —                      | —                | 904.0–1214.3         | 937.3 ± 85.1      | 59.1–59.9                         | 59.75 ± 0.28                   |
|                                  | Thorax             | 22.08 ± 1.61           | —                | 102.5–427.5          | 181.7 ± 79.0      | 2.4–12.0                          | 4.86 ± 2.20                    |
|                                  | Abdomen and pelvis | —                      | 74.80 ± 11.2     | 322.3–1217.0         | 687.3 ± 261.3     | 6.6–25.4                          | 13.48 ± 5.06                   |
| Canada                           |                    |                        |                  |                      |                   |                                   |                                |
| CT scanner                       | Examination        | Mean AP thickness (cm) | Mean weight (kg) | Min/max DLP (mGy·cm) | Mean DLP (mGy·cm) | Min/Max CTDI <sub>vol</sub> (mGy) | Mean CTDI <sub>vol</sub> (mGy) |
| Definition Edge <sup>2018</sup>  | Head               | —                      | —                | 588.3–773.0          | 638.7 ± 59.8      | 35.4–45.6                         | 40.00 ± 2.98                   |
|                                  | Thorax             | 25.56 ± 1.97           | —                | 150.2–844.6          | 363.2 ± 167.2     | 3.8–23.6                          | 10.79 ± 5.19                   |
|                                  | Abdomen and pelvis | —                      | 70.82 ± 10.85    | 252.1–797.9          | 434.2 ± 160.4     | 5.4–16.5                          | 9.28 ± 2.99                    |
| Definition Flash <sup>2011</sup> | Head               | —                      | —                | 629.0–929.0          | 820.0 ± 80.0      | 37.9–52.9                         | 45.06 ± 3.52                   |
|                                  | Thorax             | 25.22 ± 1.84           | —                | 121.0–470.0          | 273.9 ± 78.6      | 4.2–13.7                          | 8.10 ± 2.14                    |
|                                  | Abdomen and pelvis | —                      | 70.84 ± 8.46     | 241.0–1014.0         | 493.3 ± 182.5     | 6.3–20.2                          | 10.83 ± 3.71                   |
| Optima CT660 <sup>2013</sup>     | Head               | —                      | —                | 965.9–826.8          | 893.0 ± 37.7      | 43.8–44.1                         | 43.96 ± 0.07                   |
|                                  | Thorax             | 23.99 ± 2.15           | —                | 97.0–421.6           | 212.8 ± 98.7      | 2.4–12.0                          | 5.33 ± 2.67                    |
|                                  | Abdomen and pelvis | —                      | 72.26 ± 11.25    | 121.6–924.9          | 360.4 ± 198.2     | 2.6–17.8                          | 6.70 ± 3.50                    |

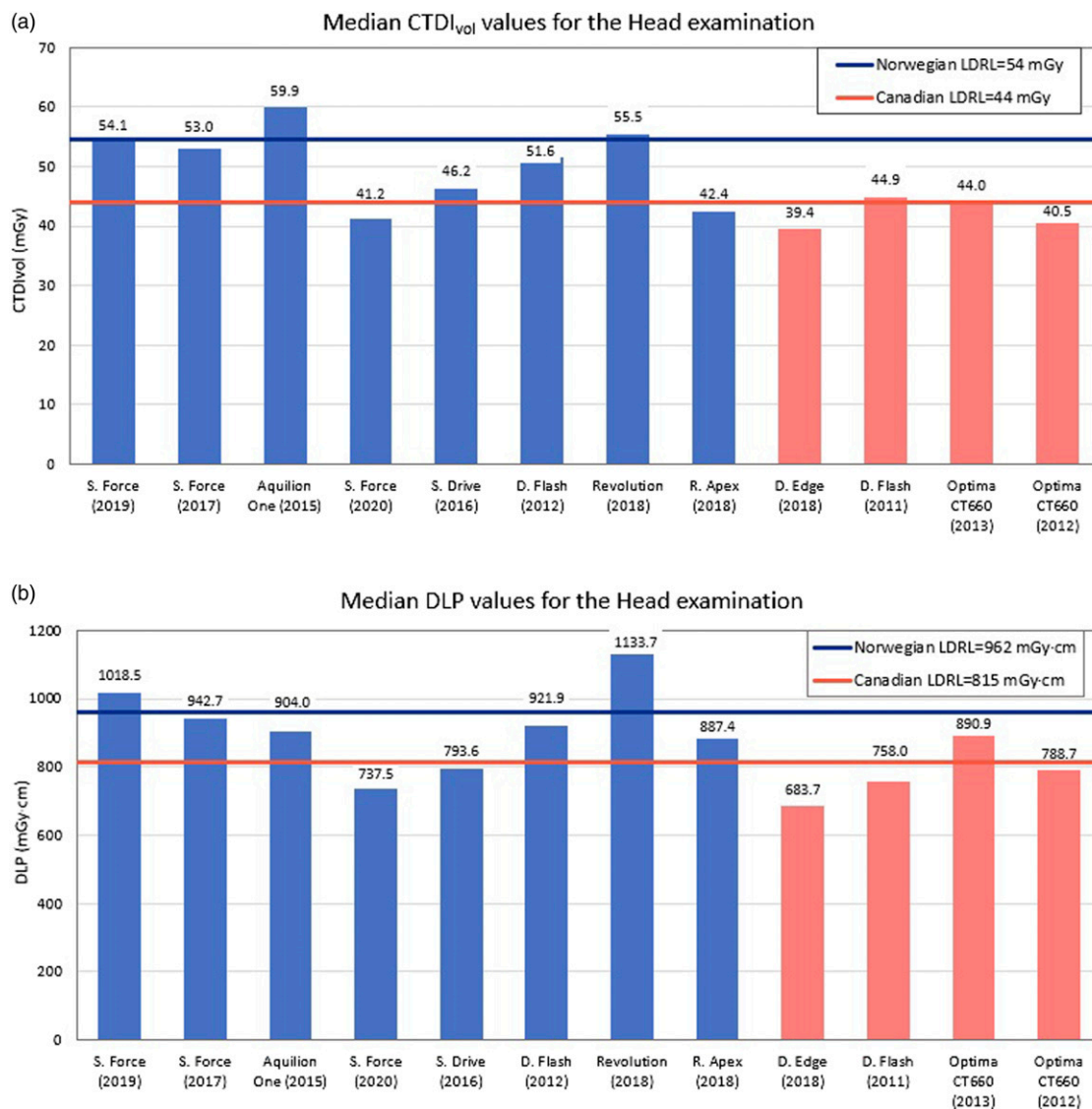
(continued)

**Table 3.** (continued)

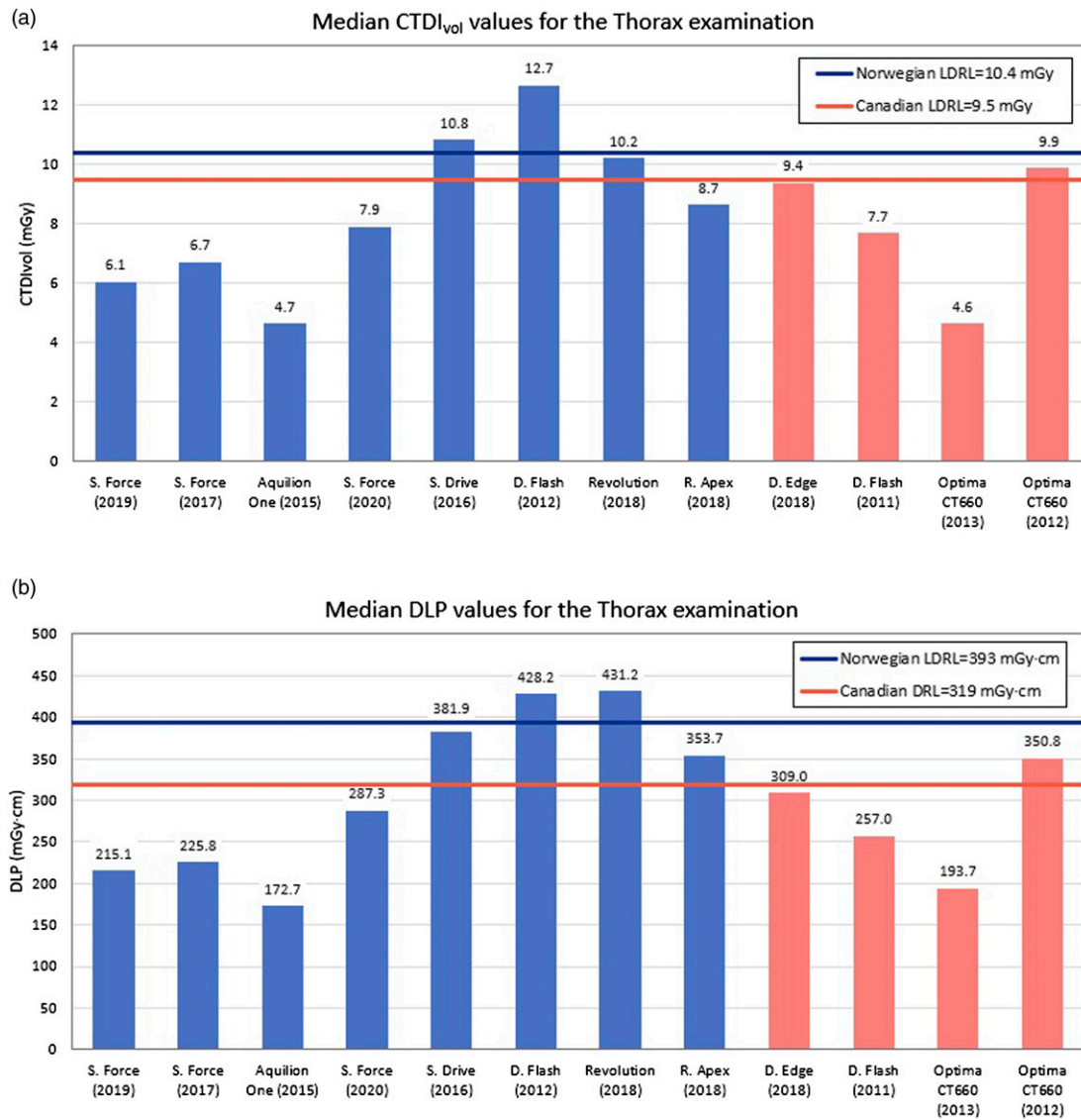
Norway

| CT scanner                   | Examination        | Mean AP thickness (cm) | Mean weight (kg) | Min/max DLP (mGy·cm) | Mean DLP (mGy·cm) | Min/max CTDI <sub>vol</sub> (mGy) | Mean CTDI <sub>vol</sub> (mGy) |
|------------------------------|--------------------|------------------------|------------------|----------------------|-------------------|-----------------------------------|--------------------------------|
| Optima CT660 <sup>2012</sup> | Head               | —                      | —                | 706.1–911.7          | 789.0 ± 49.6      | 40.3–40.5                         | 40.43 ± 0.06                   |
|                              | Thorax             | 24.62 ± 2.72           | —                | 156.9–970.9          | 414.7 ± 208.3     | 5.8–25.3                          | 11.75 ± 5.67                   |
|                              | Abdomen and pelvis | —                      | 73.12 ± 9.03     | 273.4–1804.2         | 761.41 ± 468.9    | 5.6–34.9                          | 14.50 ± 8.60                   |

Dash (—) indicates not applicable.

**Figure 1.** Distribution of the median CTDI<sub>vol</sub> (a) and DLP (b) values from all individual scanners for the head examination. The first eight bars correspond to the Norwegian hospitals and the last four to the Canadian sites; horizontal lines correspond to the determined local DRLs from each country.





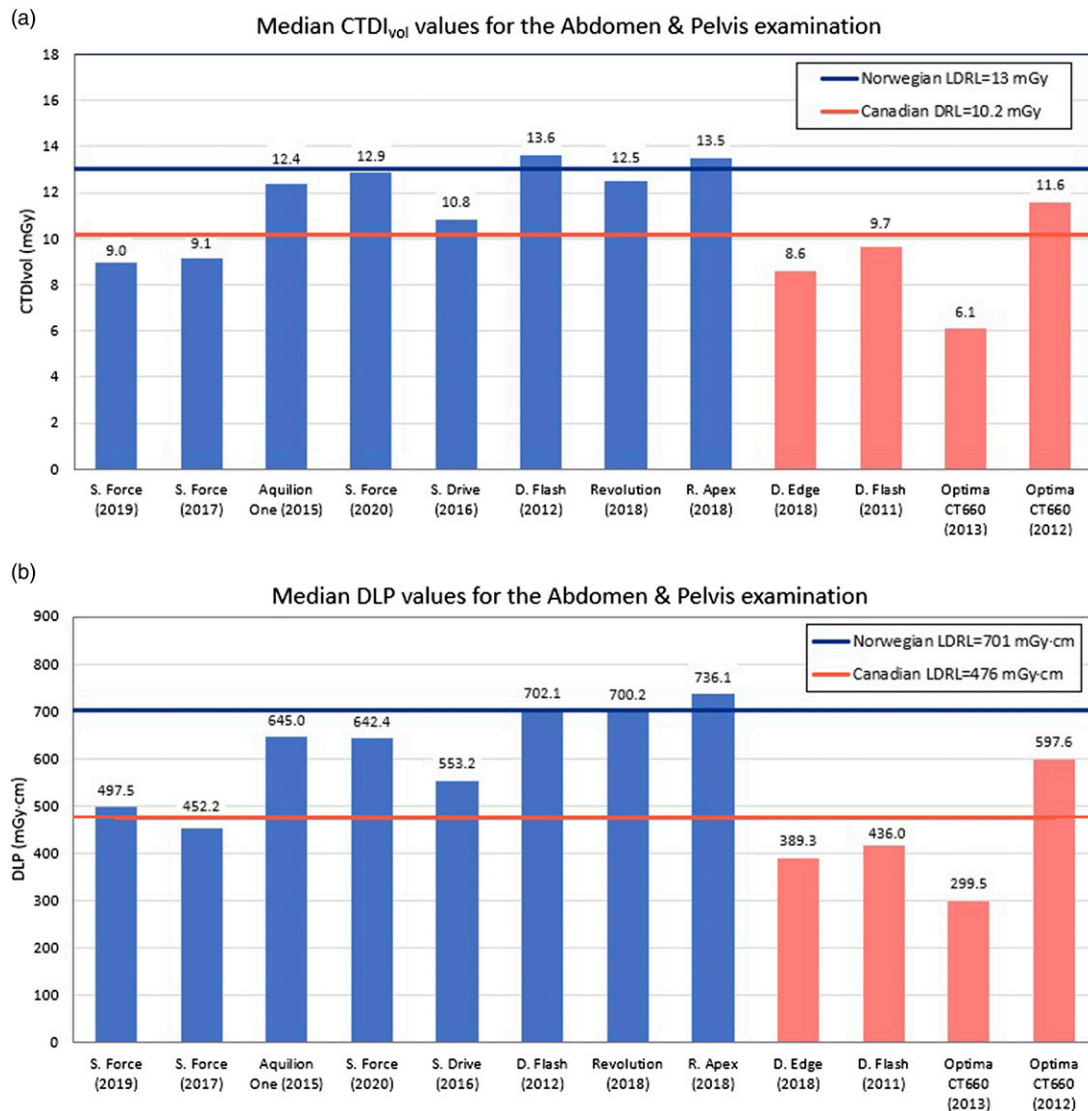
**Figure 2.** Distribution of the median CTDI<sub>vol</sub> (a) and DLP (b) values from all individual scanners for the thorax examinations. The first eight bars correspond to the Norwegian hospitals and the last four to the Canadian sites; horizontal lines correspond to the determined local DRLs from each country.

The local and national Norwegian and Canadian DRLs are demonstrated in Figure 4 in comparison with the published international data. It should be noted that Norway has no established reference levels for the abdomen and pelvis examination. The NDRLs for the head and thorax in Norway are in the same range as the international data. Canadian NDRLs for the head CT are the highest among compared countries. For the thorax and abdomen and pelvis examinations, Canadian NDRLs are closer to the international values; however, they are still at the higher end of the spectra.

## Discussion

The local reference levels in Canada were lower than the LDRLs in Norway for all considered examinations,

although the doses from some individual Norwegian scanners were below the Canadian LDRLs. The Canadian LDRLs were also below the Canadian national reference levels for all considered examinations. From the head scans completed in Norway, it was evident that the local reference level for the DLP is slightly higher than the Norwegian NDRL value, but the CTDI<sub>vol</sub> is marginally lower than the national standard. The LDRL values for thorax were higher than the NDRLs. One of the reasons for the difference between the determined LDRLs and NDRLs is that the national reference levels in Canada are older than the Norwegian NDRLs. While the Norwegian national data was collected in 2017 and published in 2018,<sup>14</sup> the Canadian national survey was conducted in 2014 and the results were published in 2016,<sup>15</sup> therefore Canadian NDRLs don't



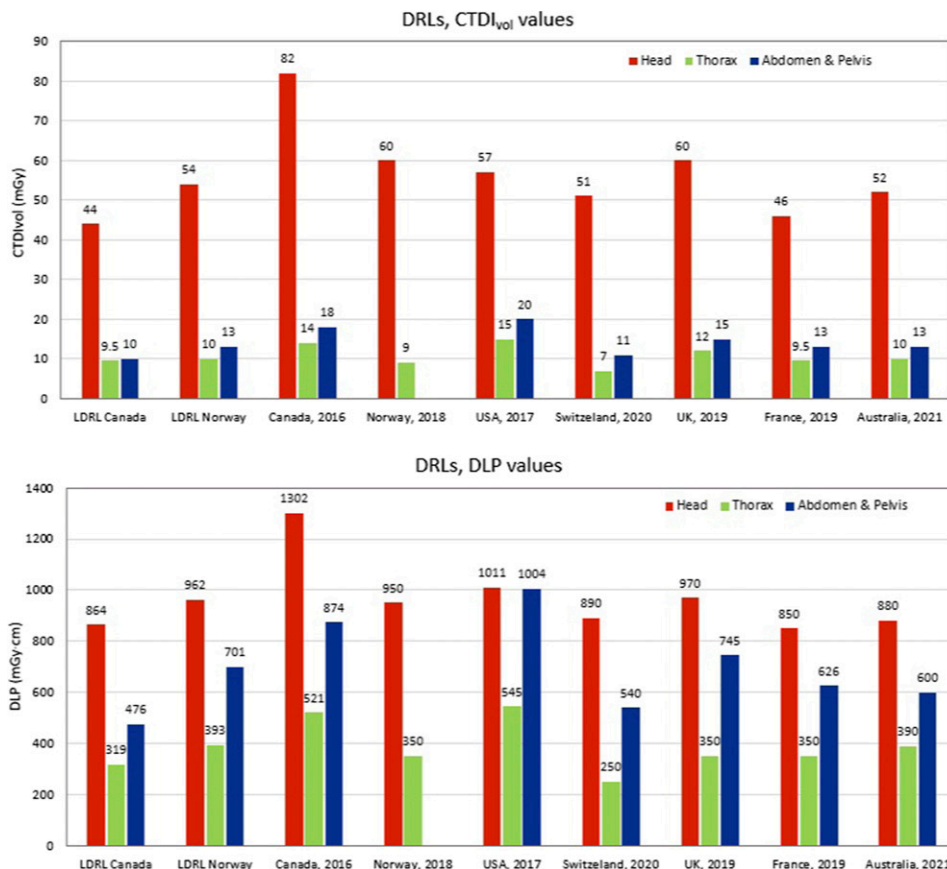
**Figure 3.** Distribution of the median CTDI<sub>vol</sub> (a) and DLP (b) values from all individual scanners for the abdomen and pelvis examinations. The first eight bars correspond to the Norwegian hospitals and the last four to the Canadian sites; horizontal lines correspond to the determined local DRLs from each country.

reflect the latest development in CT technology that allows a reduction in dose. Furthermore, an explanation for why the local doses from Canada are lower than the local Norwegian doses is that there have been measures to reduce doses in Nova Scotia after a provincial survey in 2017.<sup>11</sup> This publication states that the results were distributed to the facilities and included dose reduction measures recommended to the hospital sites with the highest radiation exposures.

The comparison between individual scanners also demonstrated wide variations in the dose indicators confirmed by the statistical analysis ( $p < 0.5$ ). The Canadian Siemens Definition Flash was installed in 2011, and the same model Norwegian scanner in 2012. However, the

Canadian scanner is producing lower doses than the Norwegian scanner for the considered examinations. All three scanning protocols are very similar with exception of quality reference mAs (tube current-time product/pitch), which is higher on the Norwegian scanner (Table 2). Siemens uses a quality reference mAs (tube current-time product/pitch) to establish the desired image noise level when automatic exposure control (AEC) is used. The AEC is a scanner feature that automatically adapts the x-ray tube current to the overall patient size to achieve a specified level of image quality.<sup>22,23</sup> The lower quality reference mAs allowed reducing radiation dose even for larger patients. For instance, the patient group surveyed at the Canadian scanner has a higher mean thorax thickness of 25.2 cm, which is





**Figure 4.** Comparison of the local Canadian and Norwegian DRLs determined in the current study with the national and international published data.<sup>14,15,17–21</sup> The DRL for the abdomen and pelvis examination has not been established in Norway.

23.2 cm in the group from the Norwegian Definition Flash. However, the radiation dose resulting from the thorax examination is 40% lower on the Canadian scanner (Figure 1(c) and (d)).

When investigating the different scanners in this study, it is apparent that even scanners under the same protocol vary in produced dose across the different examinations. As shown in Table 2, there are three different Siemens scanners under the same protocol at hospital # 2. These are the Somatom Force<sup>2020</sup>, Somatom Drive<sup>2016</sup>, and Somatom Flash<sup>2012</sup> (Siemens Healthineers). The only variation in parameters listed in the protocols between these scanners is the iterative reconstruction (IR) used. The Force and Drive utilize Admira, while the Flash makes use of Safire which is the more dated algorithm of the two.

For the head examination, the CTDI<sub>vol</sub> and DLP values increased according to scanner age and version of IR with the lower dose corresponding to the newer scanners (Figure 1), as there are no considerable variations in the head size of adult patients and a fixed 120 kV is used. Unlike head CT examinations, the weight and thickness of the patients have a stronger impact on the dose received from other included body parts imaging. Therefore, for the thorax examination, the scanners use Care kV which has the

advantage of automatically selecting the optimal kV settings to potentially save dose.<sup>24</sup> The abdomen and pelvis protocol makes use of SEMI kV which allows for a user-defined kV setting to be implemented that could result in different choices of kV for patients of the same weight.

In Canada, the two GE Optima 660 machines from hospital # 6 and hospital # 5, installed in 2012 and 2013, respectively, are the same model but they were still significantly different in doses for all examinations (Figures 1–3). This is due to the differences in the scanning protocols reflecting differences in clinical practices and preferences of the local imaging staff. The same applies to the three Norwegian scanners consisting of the Siemens Somatom Force models, installed in 2017 and 2019 at the hospital # 1, and in 2020 at hospital # 2. As expected, the collected doses reflected differences in the protocols implemented at each hospital. It should additionally be emphasized that hospital # 1 uses dual-energy (DE) on its Somatom scanners for the abdomen/pelvis examinations and dual-source (DS) acquisition for the thorax examinations, while hospital # 2 does not. This is most probably the reason for the dose differences between these two hospitals for both the thorax and abdomen/pelvis examinations.

A significant limitation of this study is the number of scanners included from Nova Scotia, Canada. Nova Scotia had four scanners surveyed, while Norway had eight. In order to make this study as accurate as possible, scanners of the same age and from the same manufacturer were included, therefore limiting the number of scanners available in Nova Scotia. Another limitation encountered was the number of conducted examinations with the standard protocol for abdomen and pelvis in 2021 on the Norwegian Canon Aquilion One<sup>2015</sup> scanner. Therefore, to have a sample of 20 average patients, data dating back to October 2018 were collected. However, the protocols in 2021 were identical to the protocols in 2018 reducing the impact on the collected DRLs. The patient exclusion criteria were also limitations of this study. As it was indicated above, the patient height for the BMI calculation, and even the weight for thoracic imaging, were not part of the patient study on PACS in Canada and therefore could not be extracted for the retrospective data collection.

In conclusion, it was evident that the local DRLs in Norway were higher overall, and many exceeded the national and international determined DRLs, while Canadian LDRLs were below the NDRLs. When comparing the median doses from the same scanner manufacturer, or even the same model, the variation in dose values was evident in both countries, demonstrating the potential for protocol optimization.

### Acknowledgments

The authors are grateful for help and assistance from the hospitals involved in this study, and the Norwegian Directorate for Higher Education and Skills for support which made this study possible.

### Declaration of conflicting interests

The author(s) declared no potential conflicts of interest with respect to the research, authorship, and/or publication of this article.

### Funding

The author(s) received no financial support for the research, authorship, and/or publication of this article.

### ORCID iD

Safora Johansen  <https://orcid.org/0000-0003-2307-4179>

### References

- Booij R, Budde RPJ, Dijkshoorn ML, et al. Technological developments of X-ray computed tomography over half a century: User's influence on protocol optimization. *Eur J Radiol* 2020; 131: 109261.
- Héliou R, Normandeau L, Beaudoin G. Towards dose reduction in CT: patient radiation dose assessment for CT examinations at university health center in Canada and comparison with national diagnostic reference levels. *Radiat Prot Dosimetry* 2012; 148: 202–210.
- Lell MM, Kachelrieß M. Recent and upcoming technological developments in computed tomography. *Invest Radiol* 2020; 55: 8–19.
- Cho P, Seo B, Choi T, et al. The development of a diagnostic reference level on patient dose for CT examination in Korea. *Radiat Prot Dosimetry* 2008; 129: 463–468.
- Elnour AR, Barakat M, Tamam N, et al. Estimation of radiation risk and establishment of diagnostic reference levels for patients undergoing computed tomography chest-abdomen-pelvic examinations in Sudan. *Radiat Prot Dosimetry* 2021; 196: 104–109.
- Smith-Bindman R, Wang Y, Chu P, et al. International variation in radiation dose for computed tomography examinations: prospective cohort study. *BMJ* 2019; 364: k4931.
- Trattner S, Pearson GND, Chin C, et al. Standardization and optimization of computed tomography protocols to achieve low-dose. *J Am Coll Radiol* 2014; 11: 271–278.
- Suliman II, Bashier EH, Awad M, et al. National diagnostic reference levels and achievable doses for standard CT examinations in Sudan. *Radiat Prot Dosimetry* 2021; 196: 1–9.
- International Commission on Radiological Protection. ICRP publication 135: Diagnostic reference levels in medical imaging. *Ann ICRP* 2017; 46: 1–144.
- Martin C, Vano E. Diagnostic reference levels and optimisation in radiology: where do we go from here? *J Radiol Prot* 2018; 38: E1–E4.
- Tonkopi E, Duffy S, Abdolell M, et al. Diagnostic reference levels and monitoring practice can help reduce patient dose from CT examinations. *AJR Am J Roentgenol* 2017; 208: 1073–1081.
- Awad MF, Karout L, Arnous G, et al. A systematic review on the current status of adult diagnostic reference levels in head, chest and abdominopelvic Computed Tomography. *J Radiol Prot* 2020; 40: R71–R98.
- Damilakis J, Frija G, Hierath M, et al. European study on clinical diagnostic reference levels for X-ray medical imaging: EUCLID. Publications Office, 2021. Available at: <https://data.europa.eu/doi/10.2833/452154> (accessed 23 June 2022).
- Widmark A. Representative doser i Norge - 2017. PDF. DSA.no: Direktoratet for Atomsikkerhet og Strålevern, 2018. Available at: [https://dsa.no/publikasjoner/stralevernrapport-3-2018-representative-doser-i-norge-2017/StralevernRapport\\_2017-3\\_Representativedoser2017.pdf](https://dsa.no/publikasjoner/stralevernrapport-3-2018-representative-doser-i-norge-2017/StralevernRapport_2017-3_Representativedoser2017.pdf) (accessed 23 June 2022).
- Health Canada. Canadian computed tomography survey: national diagnostic reference levels. Published June 14, 2016. Available at: <https://www.canada.ca/en/health-canada/services/publications/health-risks-safety/canadian-computed-tomography-survey-national-diagnostic-reference-levels.html> (accessed 23 June 2022).
- McCollough C, Bakalyar DM, Bostani M, et al. Use of water equivalent diameter for calculating patient size and size-

- specific dose estimate (SSDE) in CT. The report of AAPM Task Group 220. American Association of Physicists in Medicine, 2014.
17. Kanal KM, Butler PF, Sengupta D, et al. U.S. diagnostic reference levels and achievable doses for 10 Adult CT examinations. *Radiology* 2017; 284:120–284:133.
  18. Aberle C, Ryckx N, Treier R, et al. Update of national diagnostic reference levels for adult CT in Switzerland and assessment of radiation dose reduction since 2010. *Eur Radiol* 2020; 30: 1690–1700.
  19. Public Health England. National Diagnostic Reference Levels (NDRLs) from 19 August 2019. Available at: [www.gov.uk/government/publications/diagnostic-radiology-national-diagnostic-reference-levels-ndrls/ndrl](http://www.gov.uk/government/publications/diagnostic-radiology-national-diagnostic-reference-levels-ndrls/ndrl) (accessed 23 June 2022).
  20. IRSN. Analyse des données relatives à la mise à jour des niveaux de référence diagnostiques en radiologie et en médecine nucléaire. year. Available at: [https://www.irsn.fr/FR/expertise/rapports\\_expertise/Documents/radioprotection/IRSN\\_NRD-Bilan-2016-2018-Diagnostic-Medical\\_202004.pdf](https://www.irsn.fr/FR/expertise/rapports_expertise/Documents/radioprotection/IRSN_NRD-Bilan-2016-2018-Diagnostic-Medical_202004.pdf) (accessed 23 June 2022).
  21. Australian Radiation Protection and Nuclear Safety Agency. Available at: <https://www.arpsa.gov.au/research-and-expertise/surveys/national-diagnostic-reference-level-service/current-australian-drls/mdct> (accessed 23 June 2022).
  22. Inoue Y, Nagahara K, Kudo H, et al. CT dose modulation using automatic exposure control in whole-body PET/CT: effects of scout imaging direction and arm positioning. *Am J Nucl Med Mol Imaging* 2018; 8(2): 143–152.
  23. Ranallo FN, Szczykutowicz T. The correct selection of pitch for optimal CT scanning: avoiding common misconceptions. *J Am Coll Radiol* 2015; 12: 423–424.
  24. Bebbington NA, Jørgensen T, Dupont E, et al. Validation of CARE kV automated tube voltage selection for PET-CT: PET quantification and CT radiation dose reduction in phantoms. *EJNMMI Phys* 2021; 8: 29.